

September  
2006



BETHLEHEM ELEMENTARY SCHOOL

MICHELLE A. SNYDER, PRINCIPAL

22 CHAPEL ROAD  
WHEELING WV 26003

Phone: (304) 243-0350  
FAX: (304) 243-0351

## PRINCIPAL'S WELCOME

Welcome back to all our families for the 2006-2007 school year, and I extend a warm welcome to all families and students who are new to Bethlehem.

The staff has been busy preparing classrooms and materials for the students, and there is much excitement in the building as we all look forward to a great school year.

On the first day of school, and during family visits to our new kindergarten students, several pieces of information were given to the students. Please take time to review it and complete the forms which need to be returned to school. This information is very important and will help us better serve you and your child during this school year.

The school newsletter will be sent home monthly. Please read the information presented as it will help to keep you informed of upcoming events and happenings at school.

## BETHLEHEM STAFF

We are pleased to welcome the following individuals to the staff of Bethlehem Elementary School:

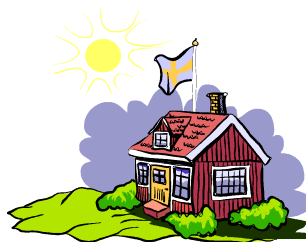
Mrs. Patricia Dorfner, 5th Grade  
Ms. Jessica Stauffer, Music K-2  
Mrs. Betty Nicodemus, Media  
Mrs. Melissa Potter, Strings  
Mrs. Bridget Robinson, speech  
Mrs. Terry Underwood, Gifted/Talented  
Mrs. Susan Nardone, Autism  
Mrs. Melissa Soltesz, Nurse

Returning staff members include:

Mrs. Michelle A. Snyder, Principal  
Mrs. Deborah Myles, Kindergarten  
Mrs. Connie Murray, Kindergarten Aide  
Ms. Karen Morris, 1st Grade  
Mrs. Karin Thompson, 2nd Grade  
Mrs. Trish Anderson, 3rd Grade  
Mrs. Janet Myers-Eikey (ME), 4th Grade  
Mrs. Ellen Culler, Art  
Mrs. Lee Cunningham, Music 3-5  
Mr. Byron Filben, Band  
Mrs. Gretchen Gill, counselor  
Mr. Gary Homer, Physical Education  
Mr. Randy Kappler, Custodian  
Mrs. Barbara Sligar, Cook  
Mrs. Phyllis Amrhein, Secretary

Our goal is to educate your child and help him/her grow into a happy, caring, successful adult. If you have any questions or concerns throughout the year, please feel free to contact your child's teacher so that together we can address these concerns.

Michele A. Snyder  
Principal



## 2006-07 SCHOOL CALENDAR

OCT. 13, **ISE DAY**  
OCT. 27, **CE DAY**  
OCT. 31, 1ST GRADING PERIOD  
NOV. 7, **ELECTION DAY**  
NOV. 10, **HOLIDAY**  
NOV. 23, **HOLIDAY**  
NOV. 24, **OSE DAY**  
DEC. 21, **ISE DAY**  
DEC. 25-JAN 2, **CLOSED**  
JAN. 3, RETURN TO SCHOOL  
JAN. 15, **HOLIDAY**  
JAN. 18, 2ND GRADING PERIOD  
FEB. 18, **ISE DAY**  
MAR. 23, 3RD GRADING PERIOD  
APR. 5, **ISE DAY**  
APRIL 6 & 9, **CLOSED DAYS**  
APRIL 10-13, **OSE DAYS**  
MAY 28, **HOLIDAY**  
JUNE 5, SCHEDULED LAST DAY FOR STUDENTS, **ISE DAY**

### **NOTE:**

**CE DAY**—CONTINUING PROFESSIONAL DEVELOPMENT FOR STAFF. **NO CLASSES SCHEDULED.**

**OSE DAY**—OUTSIDE SCHOOL ENVIRONMENT. **NO CLASSES.**

**ELECTION DAY**—**NO CLASSES**

**HOLIDAYS**—**NO CLASSES**

**ISE DAYS**—INSTRUCTIONAL SUPPORT AND ENHANCEMENT DAYS. **NO REGULAR CLASSES.** POSSIBLE PARENT/TEACHER CONFERENCES., FACULTY SENATE MEETINGS.

## Mark Your Calendar

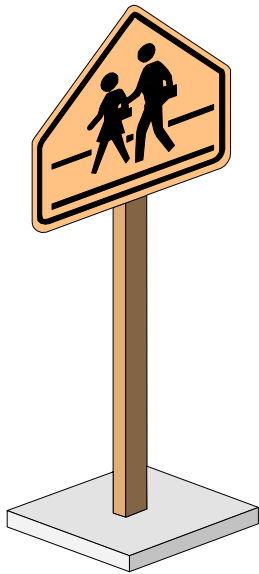
PTA/Open House, Tues.,  
Sept. 12th, 6-7:30 p.m.

6-6:30 Classroom  
Presentation  
6:30 PTA & Staff  
Introductions  
7:00 Classroom  
Presentations



## CAR RIDER DISMISSAL \* IMPORTANT!

To ensure the safety of our students and speed up the process of afternoon car riders, we ask that you follow these rules:



- ◆ Your child's name needs to be displayed in your vehicle window. After-school car rider duty will be shared among the staff, so it is very important that we are all able to identify the children.
- ◆ All drivers are requested to keep their vehicle in "park" or utilize the emergency brake until it is time to move. Move your car forward ONLY when directed by the teacher on duty. Do not speed out of the parking area.
- ◆ Children who ride with someone other than parents must have a note on file with the teacher.
- ◆ All children will enter the vehicles on the passenger side. Please move booster seats to the passenger side to help in the dismissal process.
- ◆ If your child forgets something, we ask that you park your vehicle and accompany him/her to the classroom.
- ◆ Please **LOOK BEFORE YOU MOVE YOUR CAR!** Leave the parking area with caution and be mindful of students who may be walking home.
- ◆ **THE SAFETY OF OUR CHILDREN IS OUR MAIN CONCERN!**

---

## PLEASE BE MINDFUL OF THE FOLLOWING TIMES...

- ⇒ **Before School Care available (7:30-8:45 a.m. daily)**
- ⇒ **ALL students may enter the building for school at 8:45 a.m.**
- ⇒ **School begins promptly at 9:10 a.m. Late arrivals are considered "Tardy".**
- ⇒ **School ends at 3:40 p.m., and students are dismissed at that time.**
- ⇒ **After Care Services are available (at this time) from 3:40 p.m. until 5:30 p.m. These services will be guaranteed until the 1st of October. In order to continue services for the year, at least fifteen (15) students must use the program on a regular basis.**

---

## LUNCHROOM PROCEDURES

We have reviewed all the school rules with the students, and hope that you also have taken time to read over these rules with your child/children.

Due to some inappropriate behaviors that occur during lunch, we will be implementing immediate consequences to those students who choose not to follow the lunchroom rules. The students will be kept in during recess and asked to write the lunchroom rules. This assignment will be sent home that evening asking for a parent signature, and asking the signed paper be returned to school the next day.

We appreciate your cooperation and support in this matter.

The change in the student's procedure for purchasing milk has gone well. We appreciate your help and ask for your continued support in sending the correct change with your child each day he/she purchases milk. Also, due to the brief time students were in school during August, the Breakfast/Lunch billing will be sent out the end of September to include both months of August and September.

If you have any questions, do not hesitate to call.



## RESOURCE CLASS SCHEDULE

<b>Monday—</b>	<b>Music 1-2 Strings 4 Music 3-4-5 Band</b>
<b>Tuesday—</b>	<b>Music K-2 Phys Ed K-1-4-5 Strings 5 Media 2-3-4</b>
<b>Wednesday—</b>	<b>Music K-1 Phys Ed—1-2-3-5 Music 3-4-5</b>
<b>Thursday —</b>	<b>Phys Ed K-2-3-4 Strings 4 Media K-1-5</b>
<b>Friday —</b>	<b>Art K-1-2-3-4-5 Strings 5</b>

## SCHOOL PHOTOS

**INDIVIDUAL SCHOOL PICTURES** will be taken at the school by Mr. Chap Holbert of Chap's Photography on Friday, September 29th. Picture envelopes and a letter from Mr. Holbert are attached to this newsletter. You are asked to return the envelope and the payment for the selection made, and your child when the picture is taken.

Late orders will not be accepted. A make-up date for pictures will be scheduled only for those students who miss picture day or who blinked during the first picture session.

## OHIO COUNTY SCHOOLS VOLUNTEER APPLICATION

Attached to this newsletter is a volunteer application which must be completed if you wish to help in any way with programs offered through the school (such as: tutoring, homeroom mother, chaperoning, school banking, classroom reader, Media helper, etc.) Only one application per family needs to be completed when all students names are included on the form. If you already completed an application for this school year, you do not need to send a duplicate. These applications must be renewed yearly.

## \$\$\$ ATTENTION BANKERS \$\$\$

Welcome, new and old! Student banking will begin soon and continue each Tuesday throughout the school year. So, grab your bank book, and your money, and come join us!! Remember, \$0.50 is the minimum deposit. Also, each student will receive a special prize just for banking!

Information will be coming home soon explaining the program, along with applications for those wishing to participate in the program who have not done so in the past. Look for this information, and plan to save for the future!



## BETHLEHEM PTA STEAK FRY

Mark your calendar now and plan to attend the second annual PTA Steak Fry. Enjoy fun, fellowship, and good food. All proceeds go to the Bethlehem Elementary School students for field trips, parties, last day of school fun, and much, much more. Join in the fun on

Saturday  
September 30, 2006  
6:00 p.m. until 11:00 p.m.  
El Tor Grotto  
\$20.00 per person

Call Pam or Bruce McNeil at 243-9259

# Happy Birthday

## Happy Birthday, Students!

Throughout the school year, Mrs. Snyder recognizes all student birthdays with a special card and birthday pencil. Summer birthdays are celebrated on their 1/2 birthday. Summer birthdays included:

### JUNE:

Hannah W	Darien B	Nolan M	Alexander S	Kaitlin F	Madison M
Ronnie S	Taylor R	Austin G	Logan G	Lindsey M	

### JULY:

Allie C	Nathan A	Jared G	Jordan McC	Hunter A	Kiersten B
Maxwell S	Hannah M	Samantha S	Devin B	Jacob Y	Shayla K

### AUGUST:

Abigail S	Lara S	Daniella T	Morgan M	Courtney H	Ashlyn M
Anna G	Ateria W	Evan H			

Parents:

Cold and flu season is approaching. It is very important to remember that no meds will be given at school without a doctor's order. However, cough drops ONLY are permitted with a note from home.

If your child needs to take a prescription or over-the-counter medication at school, you must stop in the office and pick up a form to be signed by the physician and returned to the main office before we can be of help. The medication must be in its original container with the pharmacy label. Also, please keep in mind that we are not able to refrigerate medication. We do encourage that medication administration during school hours be kept to a minimum.

Remember to keep your child at home if he/she is fevered. Students should not return to school until the fever is normal for 24-hours.

I look forward to meeting you and your child during the upcoming school year.

Thank you,  
Melissa Soltesz, School Nurse

